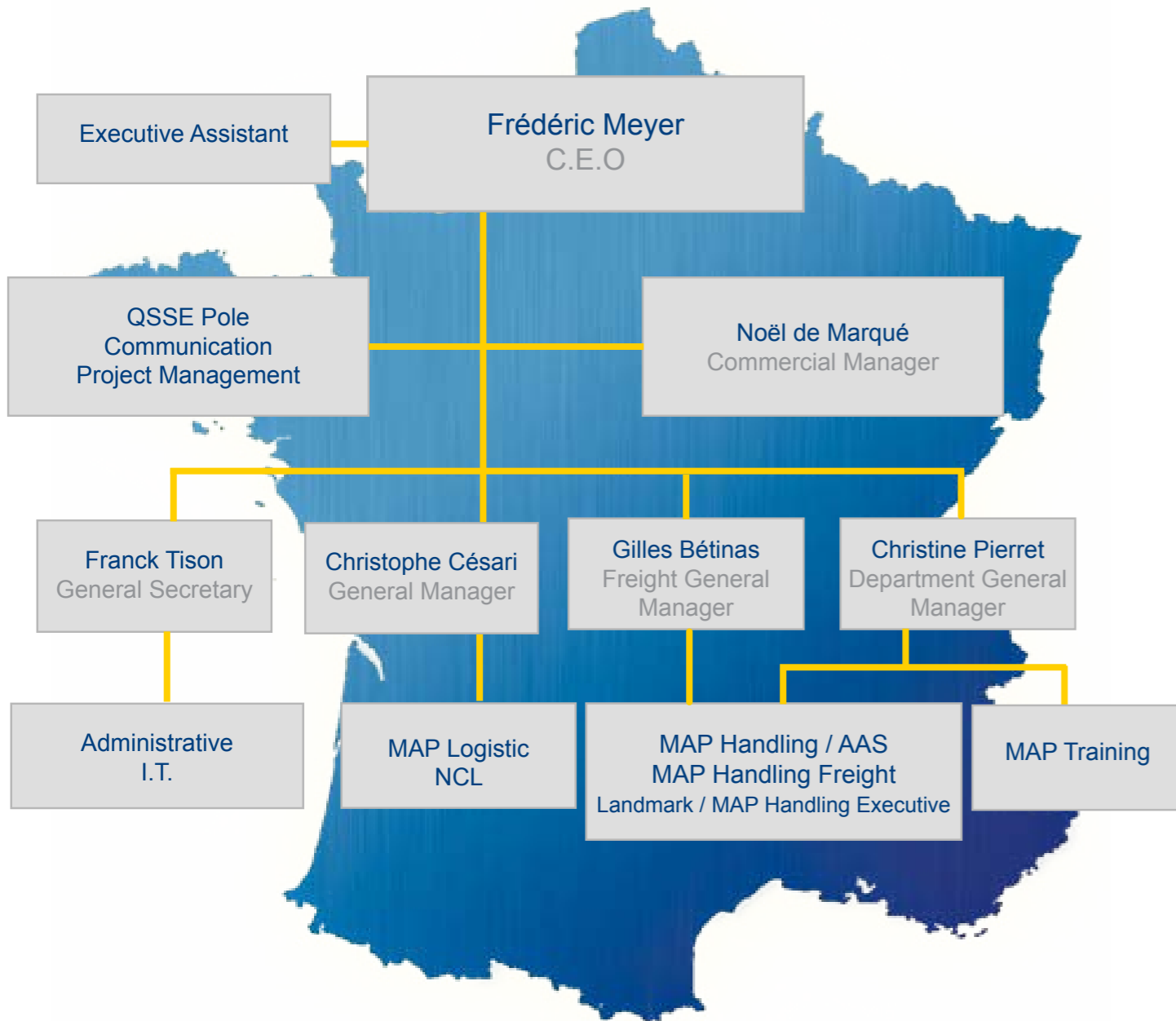


quality
security
quality
efficiency
quality
safety
security
training



www.amc-group.aero / www.map-handling.com
www.map-trainig.net / www.map-logistic.com

**Commercial aviation handling / Freight handling
Bound store / Business aviation / Training.**



PRESENTATION ... 3

OUR ACTIVITIES, OUR NETWORKS ... 4

Commercial Aviation Passenger ... 5
Commercial Aviation Cargo

General Cargo - Freight ... 6

Airport Equipment Rental ... 7

Training ... 8

General Aviation ... 9

Catering ... 10

OUR CERTIFICATIONS ... 11

AIRPORT LOCATIONS ...11 - 18

OUR REFERENCES ... 19 - 21

GROUP'S DEVELOPMENT ... 22





WHO ARE WE ?

AMC Group manages and develops assistance activities for airports, ports as well as general transportation.

OUR STRATEGY

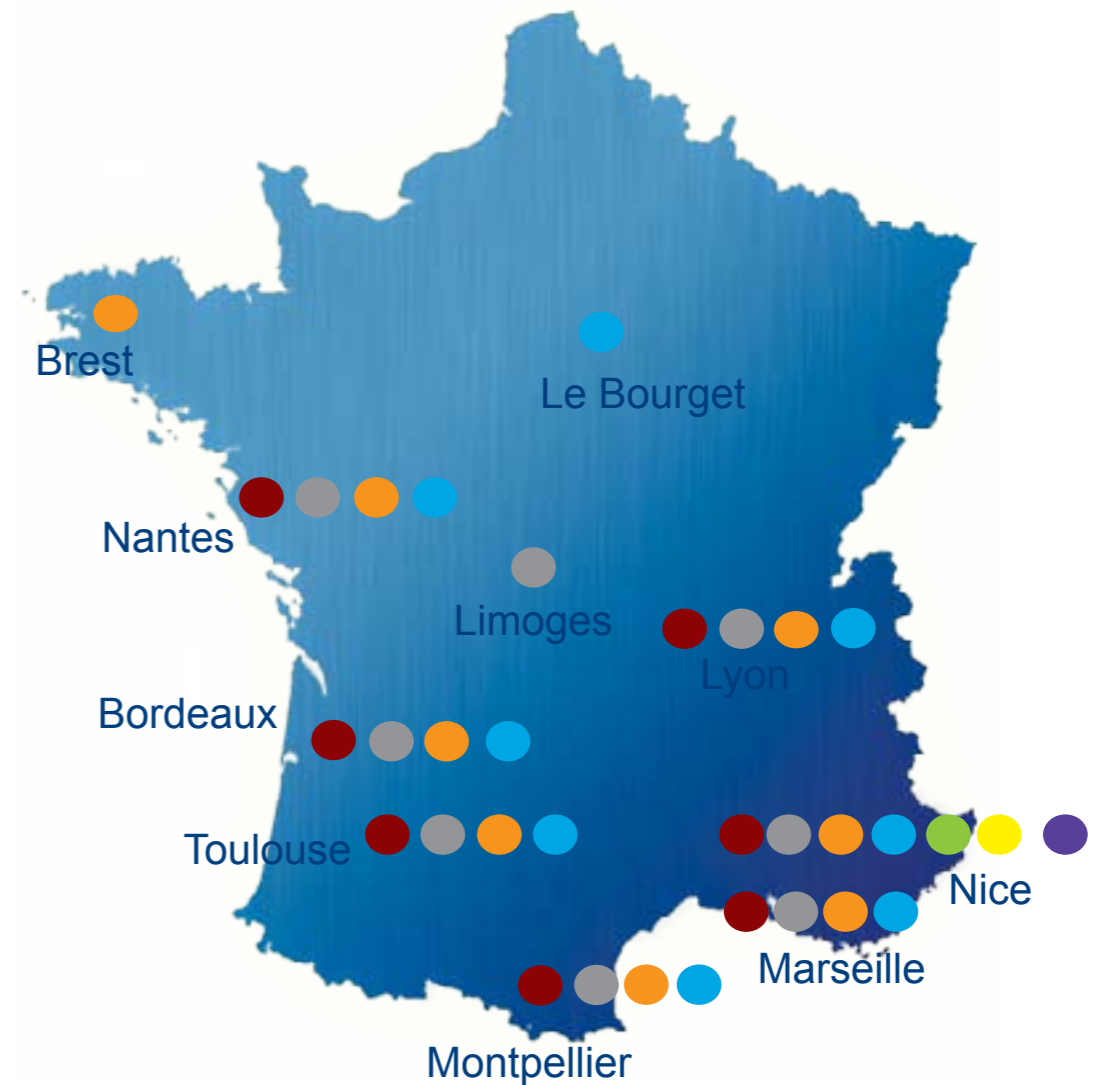
Since 2005, the group has grown by respecting its strategy to be present at the principal Provençal airports in France.

OUR OBJECTIVES

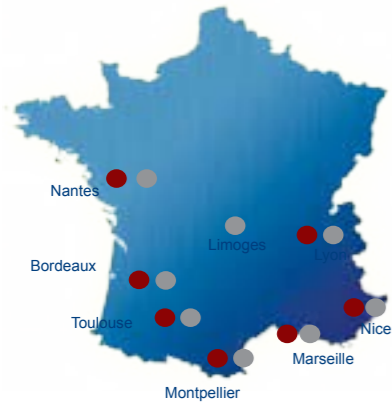
- To stand out from the competition by proposing high quality services.
- To offer the best value for money.



		Commercial Aviation / Passengers
		Commercial Aviation / Cargo
		General Cargo - Freight
		Airport Equipment Rental
		Training
		General Aviation
		Catering

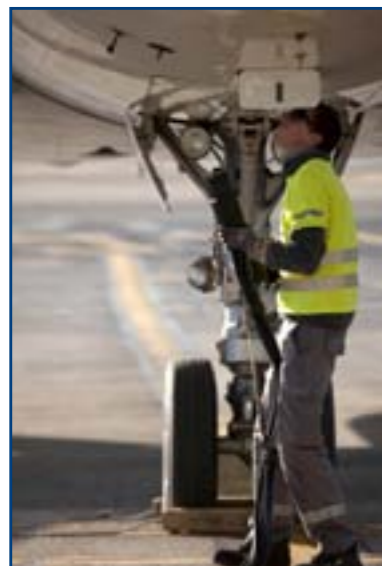


COMMERCIAL AVIATION - PASSENGERS
COMMERCIAL AVIATION - CARGO

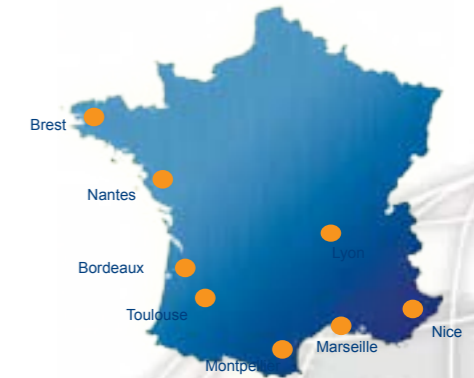


MAP Handling/Air assistances' teams provide our passengers and aircraft with services of an irreproachable quality.

Within those teams, agents are trained and are experts in freight loading and Cargo handling. Those teams work in respect of the safety and security rules in force.



GENERAL CARGO - FREIGHT



At each station, MAP Handling Freight offers solutions along the whole Supply Chain.

From the sender to the receiver, our concept named **"One Stop Shop"** optimizes the interface between each Airline and other operators (handlers, forwarders, customs, GSA, receivers)

MAP Handling Freight relies on the long experience and reliability of our co-workers who benefit from constant training.

The commitment to follow the QSSE policy in the field of management and the responses provided in the area of safety and security are proof of serious and efficient services offered day after day by MAP Handling Freight.



AIRPORT EQUIPMENT RENTAL



Autonomous subsidiary of AMC Group and also certified ISO, MAP Logistic is in charge of the complete management of airport assistance equipment. It also offers crucial optimization activities for the development of AMC :

- Aircraft maintenance,
- Airport equipment rental,
- Equipment sales...

MAP Logistic is also a consulting company aiming to offer the best solutions for its clients and for the subsidiaries of AMC Group by proposing estimations, rental, selling, maintenance...



TRAINING



Created in 1999, MAP Training is an organization specialized in Training, Supervision, Audit and Consulting in the Airport Assistance domain.

Registered by the Civil Aviation Authority and certified by IATA, MAP Training has been built on different poles of expertise: Security, Safety, Quality, Ground Handling professions.

MAP Training manages and handles the training of more than 1 000 employees within the whole national network and in all the areas covered by AMC Group's subsidiaries : Passenger services, General Aviation, Freight, Cargo, Catering, Equipment management, DCS Amadeus, SI.

MAP training also intervenes for external customers such as:

- Secondary airports,
- Private operators,
- Institutional organizations...

MAP Training is careful to follow AMC Group's Quality approach to offer structural methods as real assets.

2 Security experts trained at l'ENAC
(N° F-07-078-01-EXP and F-06-062-01-EXP)

2 Safety experts including 1 trained at CRAM
DGAC Registration N° CF-2007-04-16-06-05
dated 15th April 2007

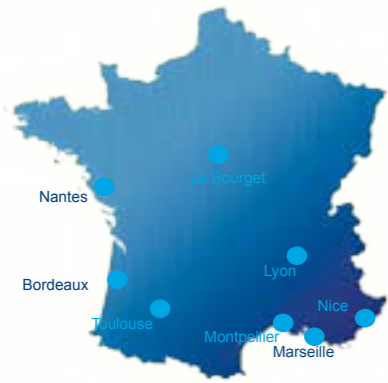
Training organism certification
N° 930 604 779 06 dated 24th May 2000

OTH Authorization
N° OTH-08-105-01 dated 14th April 2008

IATA-DGR Authorization
QFR FR



GENERAL AVIATION



CATERING



Landmark Aviation and MAP Handling Executive are today partners through a joint venture. They offer the first Network of Services in France for General Aviation assistance: LBG/LYS/NCE/MRS/MPL/TLS/BOD/NTE.

NCL: Nice Catering Loading is at the disposal of catering companies. NCL guarantees quality service up to the loading aboard aircraft.

Composed of highly qualified personnel, NCL contributes to Nice Côte d'Azur Airport's image, for commercial aviation as well as for business and private aviation.



This network is well known for its high quality service and offers the specificity of supplying fuel.





Our Certification

AMC Group has possessed the label: "Management Quality ISO 9001 version 2000" since 2007. The label upgraded to version 2008 during the renewal audit in 2010. ISO 9001 is a quality certification delivered and controlled by Bureau Veritas.

A controlled quality policy, well assimilated and directed by procedures and work instructions, permits our services to be recognized by our customers as well as by our partners.

Following that, a QSSE type procedure including Quality, Safety, Security and Environmental Protection has been initiated.

This procedure consists of the installation of a management system which guarantees the General management's commitments.

Contact details

AMC Group
Aéroport Nice Côte d'Azur
Terminal 1
06281 Nice cedex 3

Executive office : Tél : 00 + 33 (0) 4 93 21 58 20 - Fax : 00 + 33 (0) 4 93 21 82 00

C . E . O: **Frédéric Meyer**
General manager: **Christophe Césari**
General secretary: **Franck Tison**
Department General Manager - Commercial Aviation Passengers and Cargo / General Cargo - Freight / General Aviation: **Christine Pierret**
Commercial Manager: **Noël de Marqué**
General Manager General cargo - Freight: **Gilles Bétinas**
Commercial and development Manager General Cargo - Freight: **Christophe Parois**
Department Manager General Cargo - Freight : **Christophe Falcoz**
IT Manager: **Jacques Pierret**

Bordeaux Airport ●●●●

Station Manager : **Bruno LACOSTE**
Tél: 00 + 33 (0) 5 56 34 58 38 - 00 + 33 (0) 6 72 91 49 01
Address: Aéroport de Bordeaux Mérignac 33700 MERIGNAC
E-mail: bruno.lacoste@map-handling.com
Sita: BODKXXH

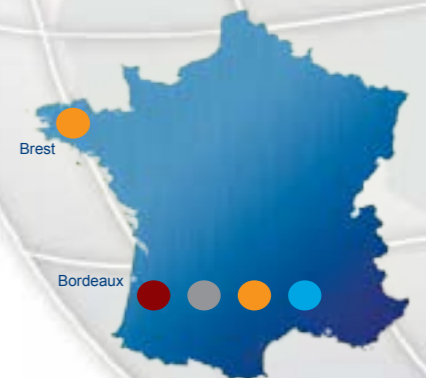
●● Commercial Aviation Passengers - Cargo
Tél: 00 + 33 (0) 5 56 34 58 38
Fax: 00 + 33 (0) 5 56 34 58 33

● General Cargo - Freight
Agency Manager: **Sylver SIN**
Tél: 00 + 33 (0) 5 56 34 67 64 - 00 + 33 (0) 6 16 02 50 23
Fax: 00 + 33 (0) 5 56 55 98 51
E-mail: sylver.sin@map-handling-freight.com

● General Aviation
Tél: 00 + 33 (0) 5 56 34 51 70
Fax: 00 + 33 (0) 5 56 34 53 43
Sita: BODKXXH

Brest Airport ●

Station Manager : **Yvette LE BOUETTE**
Tél: 00 + 33 (0) 2 98 32 01 06 - 00 + 33(0)6 13 02 25 51
Fax: 00 + 33 (0) 2 98 32 01 22
Address: Aéroport Brest Bretagne 29200 BREST
E-mail: yvette.lebouette@map-handling-freight.com





Limoges Airport ●

Agency Manager : **Karim DERMOUZ**

Tel: 00 + (0) 5 55 48 30 79 - 00 + 33 (0) 6 74 06 33 59

Address: Aéroport de Bellegarde Limoges - 81 ave de l'aéroport 87100 Limoges

E-mail: kdermouz@airassistances.com

Lyon Airport ● ● ● ●

Station Manager : **Pierre PASSERON**

Tél: 00 + 33 (0) 4 72 22 51 01 - 00 + 33 (0) 6 30 52 78 42

Address: Aéroport de Lyon Saint Exupéry BP 113 - 69125 Lyon Cedex

E-mail: pierre.passeron@map-handling.com

Sita: LYSTTXH

● ● Commercial Aviation Passengers - Cargo

Tél: 00 + 33 (0) 4 72 22 51 03

Fax: 00 + 33 (0) 4 72 22 51 06

● General Cargo - Freight

Agency Manager: **Saber DJANDOUBI**

Tél: 00 + 33 (0) 4 72 22 84 70 - 00 + 33 (0) 6 43 11 39 84

Fax: 00 + 33 (0) 4 72 22 84 21

E-mail: saber.djandoubi@map-handling-freight.com

● General Aviation

Tél: 00 + 33 (0) 4 72 22 51 00 - 4 72 22 84 23 Sita: LYSTTXH

Fax: 00 + 33 (0) 4 72 22 51 06 - 4 72 22 84 23 Sita: LYSKXH



Marseille Airport ● ● ● ●

Station Management

Tél: 00 + 33 (0) 4 42 77 97 84 - 00 + 33 (0) 6 83 82 07 31

E-mail: christophe.pierret@map-handling.com

Tél: 00 + 33 (0) 4 42 77 97 70 - 00 + 33 (0) 6 72 01 31 31 80

E-mail: cedric.vogt@map-handling.com

Address: Aéroport de Marseille Provence - BP 7 - 13727 MARIIGNANE

Sita: MRSOXXH

● ● Commercial Aviation Passengers - Cargo

00 + 33 (0) 4 42 14 34 67 (Passengers) 00 + 33 (0) 4 42 77 97 77 (cargo)

Fax: 00 + 33 (0) 4 42 77 97 78

● General Cargo - Freight

Agency Manager: **Yamin AOUIR**

Tél: 00 + 33 (0) 4 42 14 26 91 - 00 + 33 (0) 6 22 95 60 23

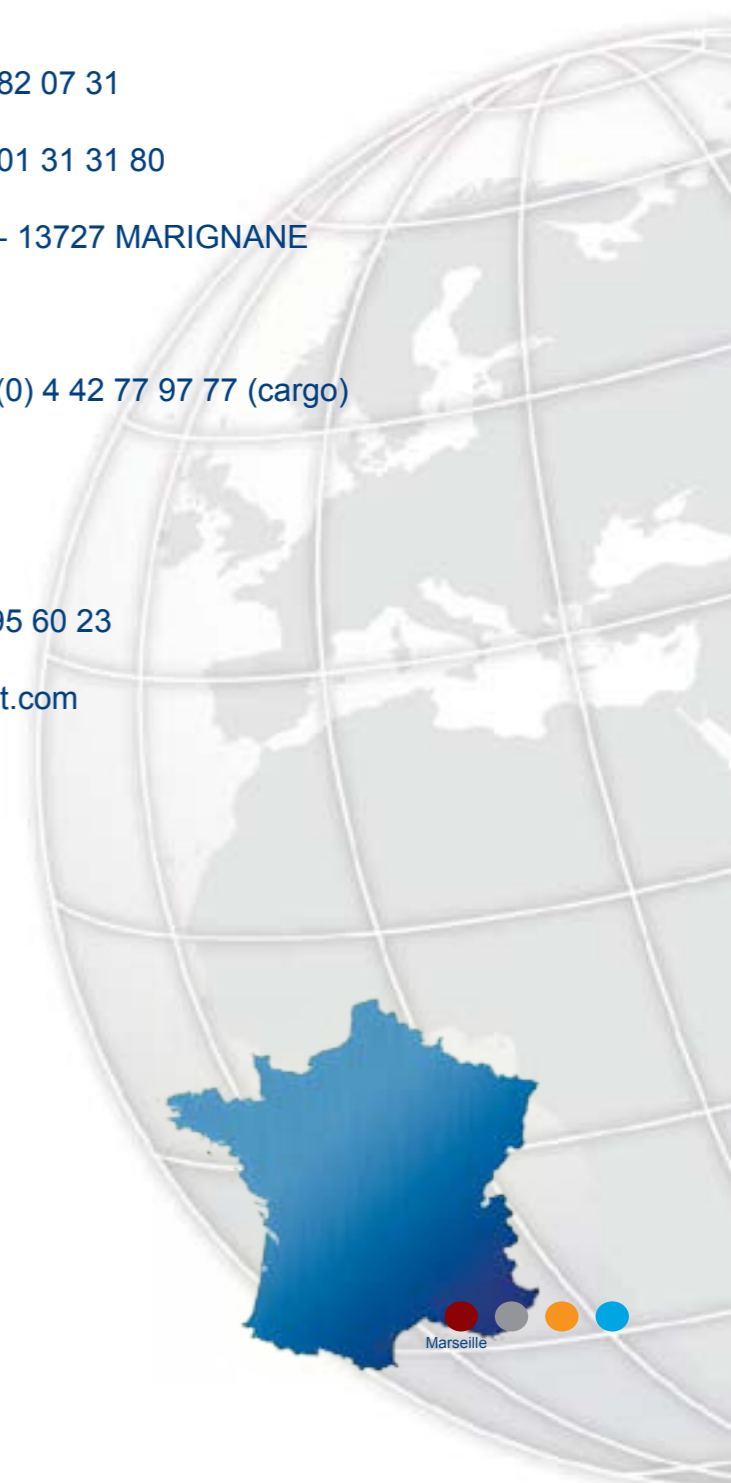
Fax: 00 + 33 (0) 4 42 14 26 34

E-mail: yamin.aouir@map-handling-freight-freight.com

● General Aviation

Tél: 00 + 33 (0) 4 42 77 97 55

Fax: 00 + 33 (0) 4 42 14 34 21





Montpellier Airport ● ● ● ●

Station Manager : **Gilles GAILLARD**
Tél: 00 + 33 (0) 4 99 52 52 54 - 00 + 33 (0) 6 74 06 41 10
Address: Aéroport Montpellier Méditerranée - 34134 MAUGUIO
E-mail: ggaillard@map-handling.com
Sita: MPLKFXH

● ● Commercial Aviation Passengers - Cargo
Tél: 00 + 33 (0) 4 99 52 52 44
Fax: 00 + 33 (0) 4 99 52 52 45

● General Cargo - Freight
Tél: 00 + 33 (0) 4 99 52 52 21
Fax: 00 + 33 (0) 4 99 52 52 57

● General Aviation
Tél: 00 + 33 (0) 4 99 52 52 44
Fax: 00 + 33 (0) 4 99 52 52 45
Sita: MPLKFXH



Nantes and St Nazaire Airports ● ● ● ●

Station Manager : **Fabrice PAPILLON**
Tél: 00 + 33 (0) 2 20 84 83 91 - 00 + 33 (0) 6 11 36 47 68
Address: Aéroport Nantes Atlantique - 44346 BOUGUENAI
E-mail: fabrice.papillon@map-handling.com
Sita: NTETTXH

● ● Commercial Aviation Passengers - Cargo
Tél: 00 + 33 (0) 2 40 84 97 70
Fax: 00 + 33 (0) 2 40 84 70 71

● General Cargo - Freight
Agency Manager: **Sylvain GAUTHIER**
Tél: 00 + 33 (0) 2 40 84 83 91 - 00 + 33 (0) 6 24 16 06 97
Fax: 00 + 33 (0) 2 72 34 16 28
E-mail: sylvain.gauthier@map-handling-freight.com

● General Aviation
Tél: 00 + 33 (0) 2 40 84 97 70
Fax: 00 + 33 (0) 2 40 84 70 71
Sita: NTETTXH





Nice Airport ● ● ● ● ● ●

Station Manager : **Florence AUGUSTYNIAK**
Tél: 00 + 33 (0) 4 93 21 82 65 - 00 + 33 (0) 6 10 72 30 66
Address: Aéroport Nice Côte d'Azur - Terminal 1 - 06281 Nice
E-mail: florence.augustyniak@map-handling.com
Sita: NCETRXH

● ● Commercial Aviation Passengers - Cargo
Tél: 00 + 33 (0) 4 93 21 82 88
Fax: 00 + 33 (0) 4 93 21 82 08

● General Cargo - Freight
Tél: 00 + 33 (0) 4 93 21 82 88
Fax: 00 + 33 (0) 4 93 21 82 08

● General Aviation
Station Manager: **Nicolas GOURJON**
Tél: 00 + 33 (0) 4 93 21 82 18 - 00 + 33 (0) 6 77 32 33 90
Fax: 00 + 33 (0) 4 93 21 82 67
E-mail: ngourjon@landmarkaviation.com
Sita: NCEAEXH

● Catering
Department Manager: **Michel VESCHI**
Tél: 00 + 33 (0) 4 93 21 82 34 - 00 + 33 (0) 6 20 24 21 74
Fax: 00 + 33 (0) 4 93 21 82 35
E-mail: michel.veschi@ncl-france.net

● Training
Executive Manager: **Christine PIERRET**
Tél: 00 + 33 (0) 4 93 21 82 61 - 00 + 33 (0) 6 85 12 05 24
Fax: 00 + 33 (0) 4 93 21 58 21
E-mail: christine.pierret@map-handling.com



Toulouse Airport ● ● ● ●

Station Manager : **Christel CHARBONNET**
Tél: 00 + 33 (0) 5 61 71 55 21 - 00 + 33 (0) 6 26 42 76 37
Address: Aéroport de Toulouse Blagnac - 31700 BLAGNAC
E-mail: christel.charbonnet@map-handling.com
Sita: TLSKCXH

● ● Commercial Aviation Passengers - Cargo
Tél: 00 + 33 (0) 5 61 16 50 20
Fax: 00 + 33 (0) 5 61 16 50 06

● General Cargo - Freight
Agency Manager: **Gilles SIMON**
Tél: 00 + 33 (0) 5 34 61 65 93 - 00 + 33 (0) 6 19 22 24 15
Fax: 00 + 33 (0) 5 61 16 50 06
E-mail: gilles.simon@map-handling-freight.com

● General Aviation
Tél: 00 + 33 (0) 5 61 71 84 27
Fax: 00 + 33 (0) 5 61 71 83 59
Sita: TLSKXXH



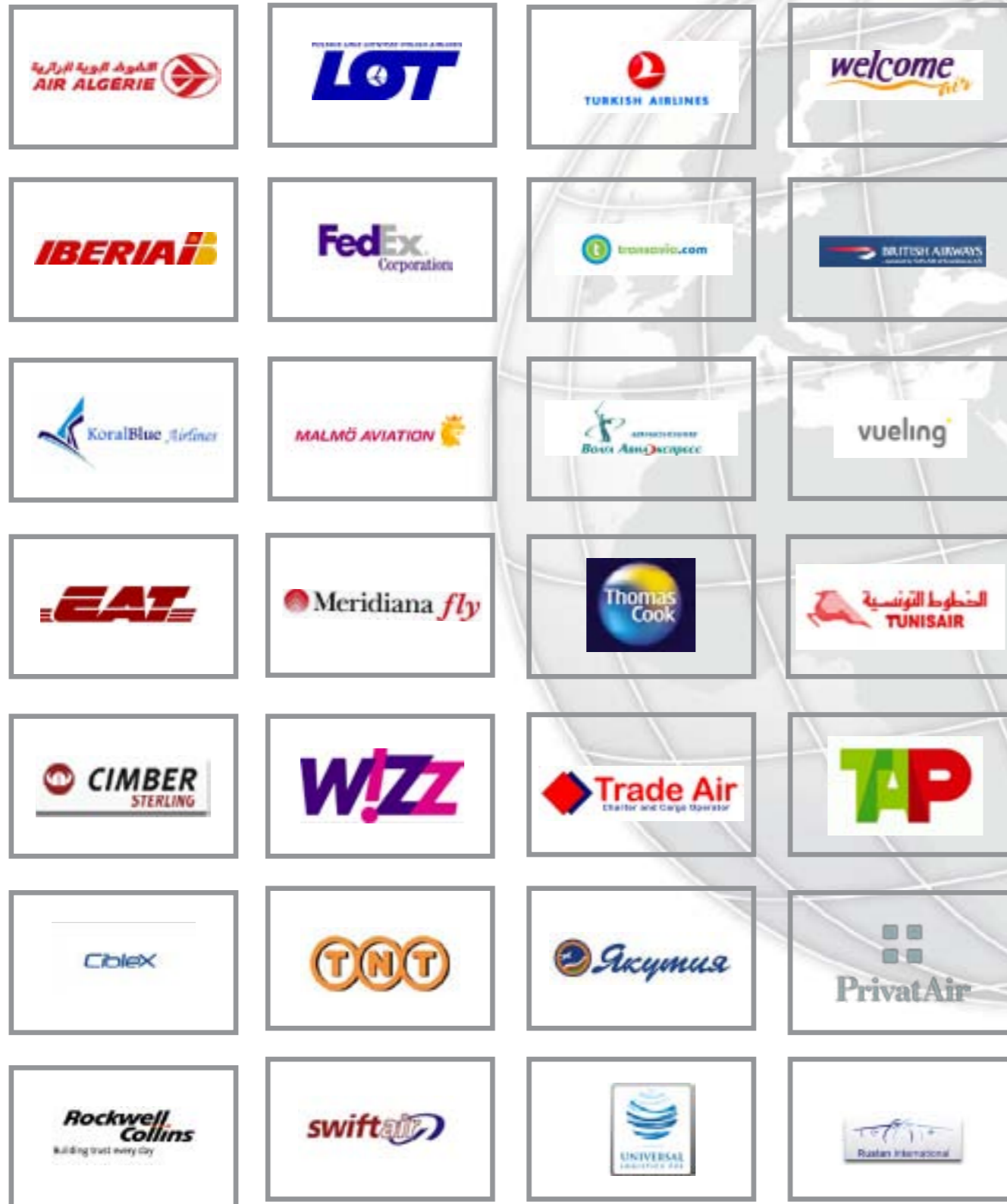
OUR REFERENCES



OUR REFERENCES



OUR REFERENCES

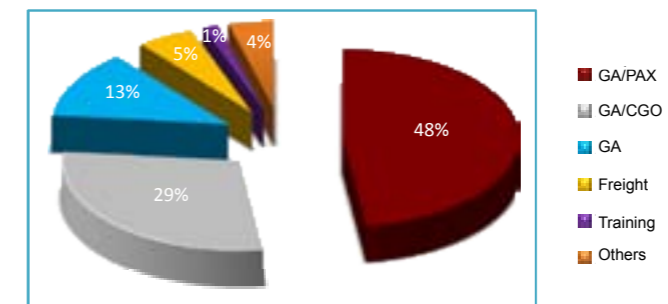


GROUP'S DEVELOPMENT



2010

Distribution of turnover 2010



AMC Group'S turnover K€



quality
security
quality
efficiency
quality
safe
safety
security
training



www.amc-group.aero / www.map-handling.com
www.map-trainig.net / www.map-logistic.com

**Commercial aviation handling / Freight handling
Bound store / Business aviation / Training.**